



Patient Safety

RightNow

It's a Good Day to Start a Conversation About Safety

Canadian Home Care Association
Regional Summit
Prince Edward Island
October 02, 2018

Wayne Miller
Senior Program Manager
Canadian Patient Safety Institute

The Landmark Pan-Canadian Safety at Home Study - 2013

- The study found that the annual incident rate of adverse events was in the range of 10-13 per cent.
- It was judged that 56 per cent of the adverse events were preventable.
- The most common adverse events in home care were falls, medication errors and infections.
- While death from adverse events is rare (a consequence 7 per cent of the time) 69 per cent led to disability and 91 per cent increased use of health care resources.

Canadian Patient Safety Week – October 29 to November 2, 2018



Welcome to asklistentalk.ca – your home for
Canadian Patient Safety Week!

Get Resources and Interesting Facts to Share with Staff and Families

- An estimated 37% of seniors in nine provinces received a prescription for a drug that should not be taken by this population.
- 2 out of 3 Canadians (66%) over the age of 65 take at least 5 different prescription medications – while 27% take at least 10 different prescription medications.
- In 2016, 1 in 143 Canadian seniors were hospitalized due to harmful effects of their medication.

Three Safety Improvement Projects

Patient Safety

RightNow



Learning Collaboratives to Demonstrate What Works

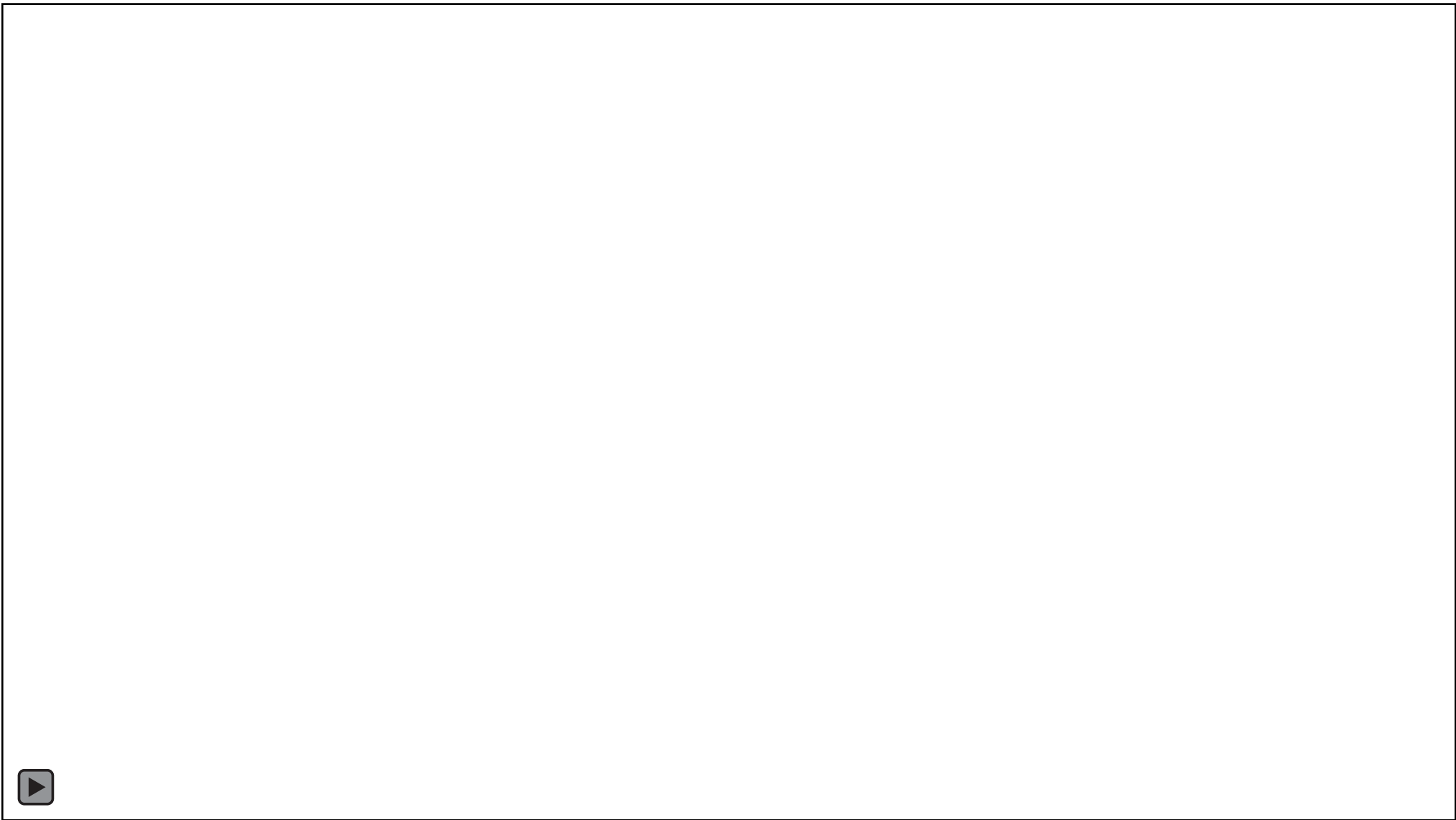
TeamSTEPS
CANADA™
Team Strategies & Tools to Enhance
Performance & Patient Safety

- The primary questions are:
 - Has patient care been safe in the past?
 - Are our clinical systems and processes reliable?
 - Is our care safe now?
 - Will our care be safe in the future?
 - Are we responding and improving?



TeamSTEPPS CANADA™

Team Strategies & Tools to Enhance
Performance & Patient Safety



PATIENT SAFETY IN THE HOME

Supporting difficult conversations

Am I Safe?



Patient Safety

RightNow



Am I Safe?

PATIENT SAFETY IN THE HOME
Supporting difficult conversations



Common elements:

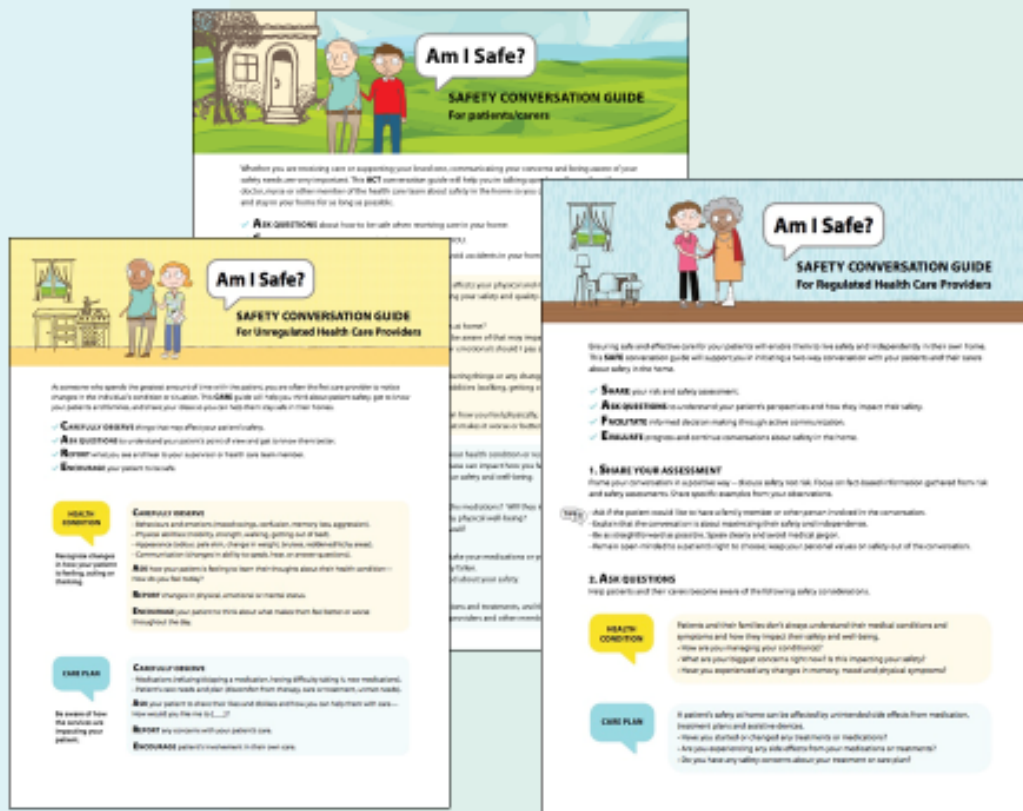
- Reframe the conversation :

~~RISK~~ SAFETY ✓

- Built on existing practices

- Four safety elements:

- ✓ Health Condition
- ✓ Care Plan
- ✓ Lifestyle Choices
- ✓ Environmental Considerations



It's a Good Day to Start a Conversation About Safety

Patient Safety **RightNow**

