

Home and Community-Based Services and Supports

Children with Complex Care Needs

What are the challenges and innovations in publicly-funded home care and community-based services for children with complex care needs?

To answer this question, the Canadian Home Care Association (CHCA) surveyed health and social ministries across Canada, researched publicly available material, interviewed subject matter experts and engaged the parents in conversations. This is what we found.

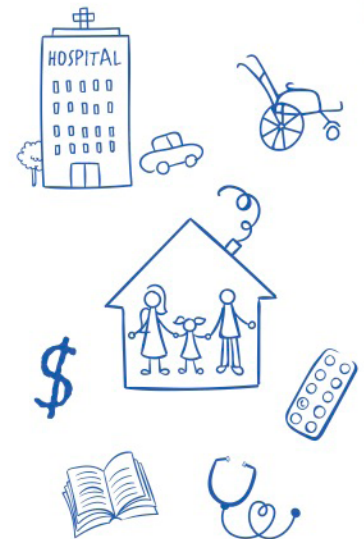
Defining children with complex care needs

Lack of common definition impacts eligibility, planning and measurement



Parent challenges

Parents and carers need respite, information, training and financial support



Accessing data

Limited data to monitor, evaluate and improve home care services

Admissions



Children receiving service



\$ Expenditures



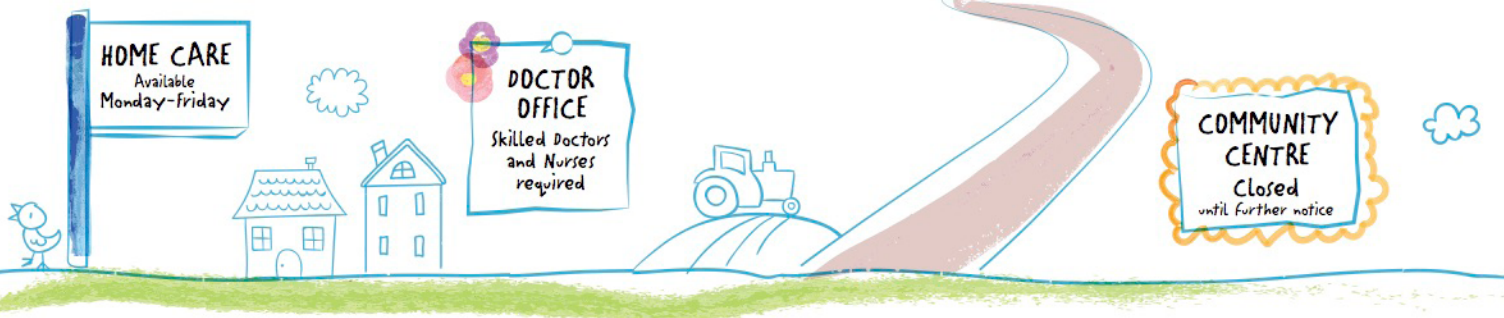
Fragmented services

Limited coordination of care and services across multiple government ministries and programs



Rural and remote access

Limited expertise, support and resources
as care moves away from urban paediatric hospital



Innovations

A number of innovative models have been developed to address the challenges in publicly-funded home care and community-based services for children with complex care needs. The use of telehealth, developing integrated frameworks, linking with paediatric centres of excellence, mentoring health care professionals and supporting parents and caregivers are all examples of innovative home care practices across Canada.

British Columbia

Children and Youth with Special Needs Framework for Action

Saskatchewan

Children with Complex Care Needs Policy

Manitoba

Integrated Children's Services (ICS) team

Ontario

Ontario Telemedicine Network

New Brunswick

Pediatric Home First Program

Northwest Territories

Framework for Early Childhood Development:
Right from the Start



Learn more about home and community-based services and supports for children with complex care needs: www.cdnhomecare.ca



The Canadian Home Care Association (CHCA) is a national, not-for-profit membership association dedicated to ensuring the availability of accessible, responsive home care, and community supports to enable people to safely stay in their homes with dignity, independence, and quality of life. Members include governments, health authorities, administration organizations, service providers and researchers.

For more information on the CHCA:

www.cdnhomecare.ca

@cdnhomecare