



A New Approach to Integration

By

David Evans – Director of Commissioning

A long way from home.

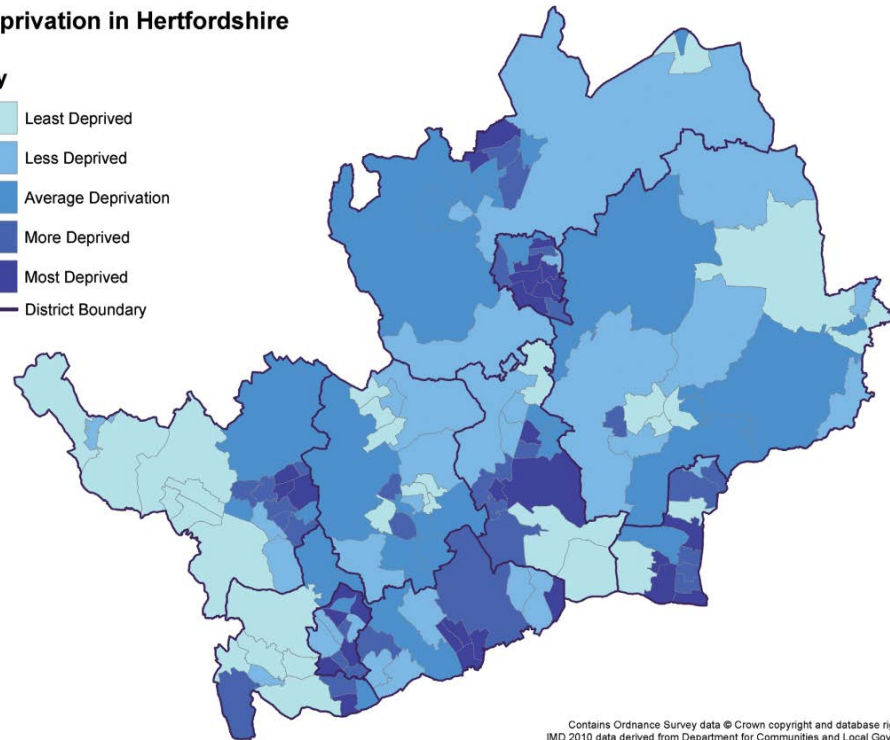
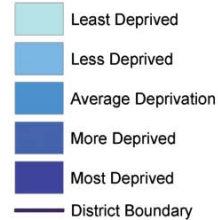


Who are Herts Valleys CCG?

- Population – 600,000
- 4 NHS Localities
- 5 District Councils
- 1 Local Authority
- Strong and diverse voluntary sector
- 60 GP practices
- Mixture of providers including acute, community, mental health and private organisations
- Overall health of the population is higher than national average but we have an ageing population to support

Deprivation in Hertfordshire

Key



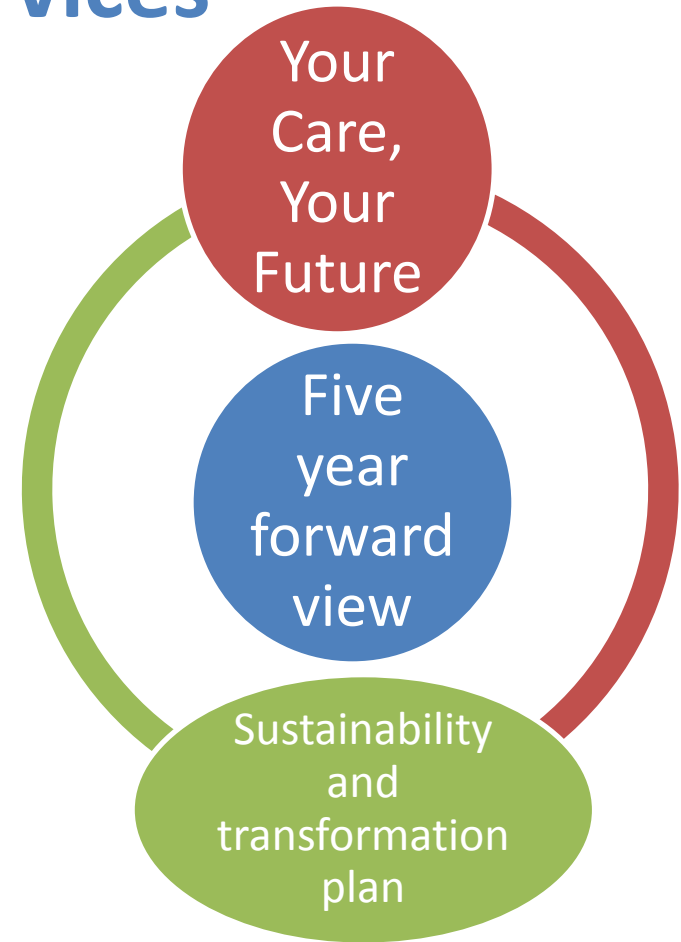
Contains Ordnance Survey data © Crown copyright and database right 2013.
IMD 2010 data derived from Department for Communities and Local Government.



Planning future services

Challenges and opportunities

- Funding pressures
- Population growth
- Ageing population with more complex care needs
- Disjointed services
- + Technology
- + Medical advances
- + Behaviour change



Our Aim: Make healthcare affordable and improve people's health experiences and outcomes by offering better coordinated care closer to home with a focus on prevention and behaviour change



Some of the challenges we face

37% increase in over-75s in the next 10 years

Factors such as **obesity, smoking, alcohol** and **not enough exercise** lead to too many people getting complex preventable illness and disability

Different health and care **information systems** limits record sharing

Early deaths from **circulatory** and **respiratory diseases** and **cancer**

Recruitment due to high living costs and many GPs retiring

Without change **funding gap** could reach **£550m**

Some health and care **buildings** not fit for purpose

... and opportunities

Medical advances

Technology

Working more efficiently

Changing attitudes and behaviour



NHS

NONE OF THESE PEOPLE NEED A&E

Cold/flu Morning after pill Stomach pain Back pain

So don't waste your time, choose well.

For more information about the choices available, visit: www.nhslocal.nhs.uk/choosewell or call NHS Direct on

Choose well.

- Walk-in Centre
- GP
- Pharmacy
- NHS Direct
- Self-Care

We've been listening ...

“**Unnecessary journeys to hospital** can be reduced by providing care closer to home”

“Local services **need to change**”

“Professionals and care **should be joined up**”

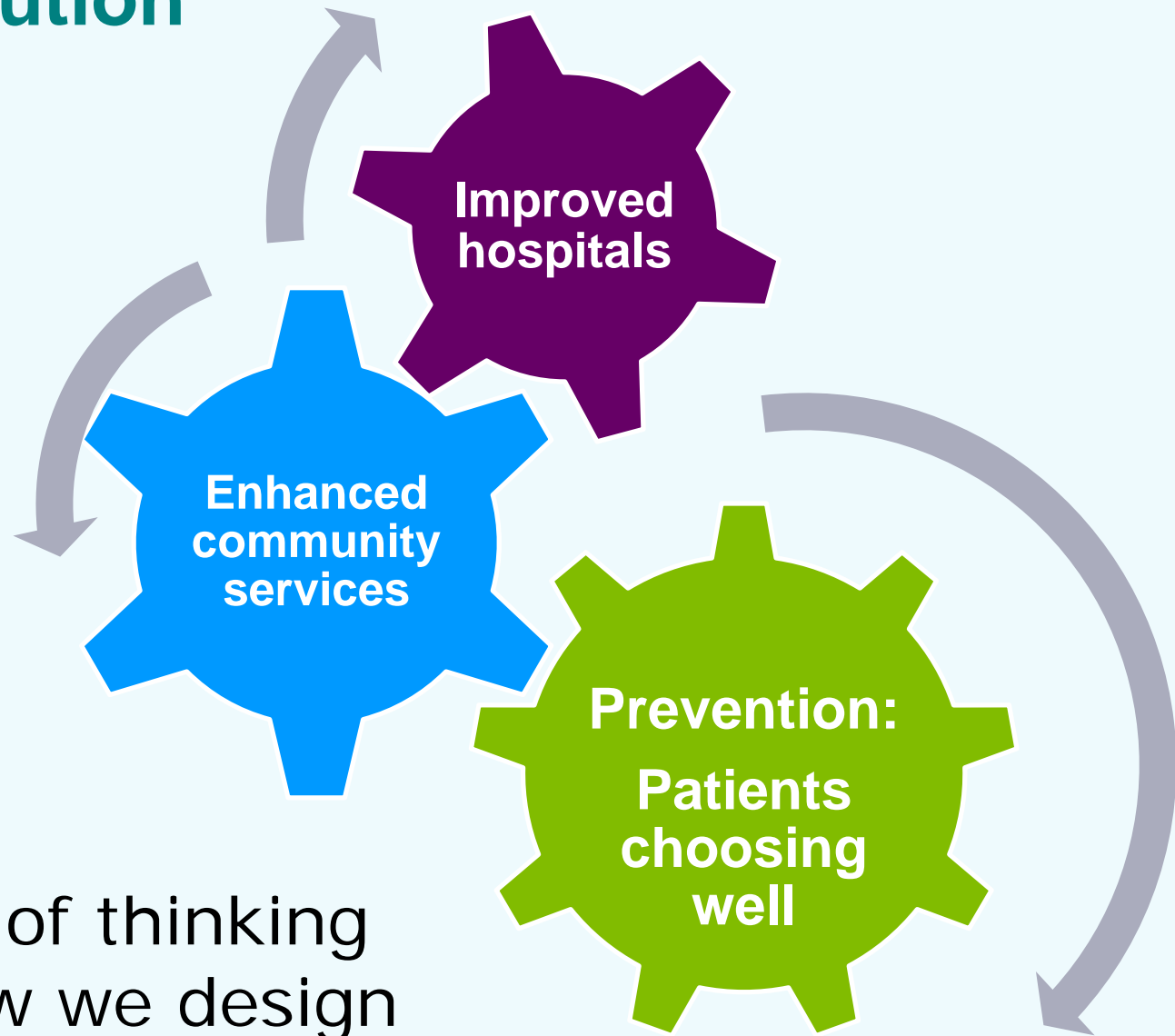
“More **focus on preventing ill-health** and addressing unhealthy lifestyles”

“Build on existing community services so more people benefit from the **care and support of voluntary organisations**”

“People should **take more responsibility** for their own health”



Total solution



New way of thinking
about how we design
and use health services

Our vision

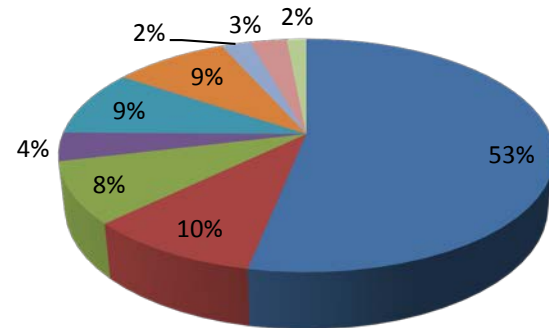
“By 2024 we would like 40% of current hospital trips shifted to a community setting.”



Herts Valleys CCG – how we spend our money

- We plan and pay for health services with a fixed budget - a duty to meet financial targets
- Our annual budget for 2017/18 is approximately £838 million for around 630,000 people registered with a GP in west Herts. Now on a par with allocations elsewhere.
- We ended 2016/17 £14.6m behind our plan

**Planned
Expenditure 2017/18**



- Acute hospitals
- Mental health and learning disabilities
- Community services
- Continuing care/funded nursing care
- Medicines management, including prescribing
- Primary Care Co-commissioning
- Other primary care
- Other programme
- Running costs

Three Rivers

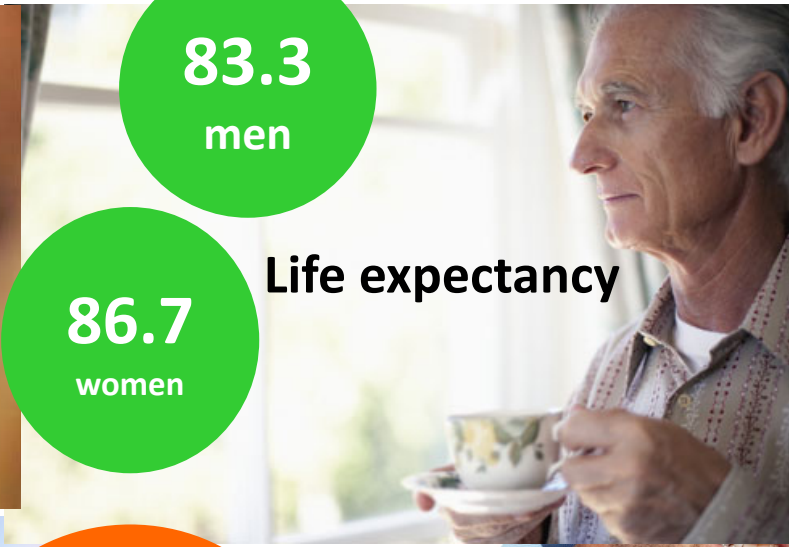


13.6%
adults
smoke

83.3
men

86.7
women

Life expectancy



59.8%
Active
adults

14.5%
long term
health
problems



59%
Adults
excess
weight



4% bad
health



15.2%
Children
Year 6
obese

18.6 %
Adults
obese



500
Alcohol
related
hospital
stays

Watford



12.5%
adults
smoke

Life expectancy

82.6
women

79.1
men


54.4%
Active
adults



4% bad
health



17.6%
long term
health
problems



63.7%
Adults
excess
weight

17%
Obese



578
Alcohol
related
hospital
stays



**Stanborough and
Central ward: Most
early deaths from
cancer**

**Meriden: 9.8 % low
birth weights**

**Meriden ward 2.5% residents
provide >50 hours unpaid care**

**Tudor Ward: Fewest early
deaths from cancer**

**Central Ward highest
number of hospital
stays for self-harm**

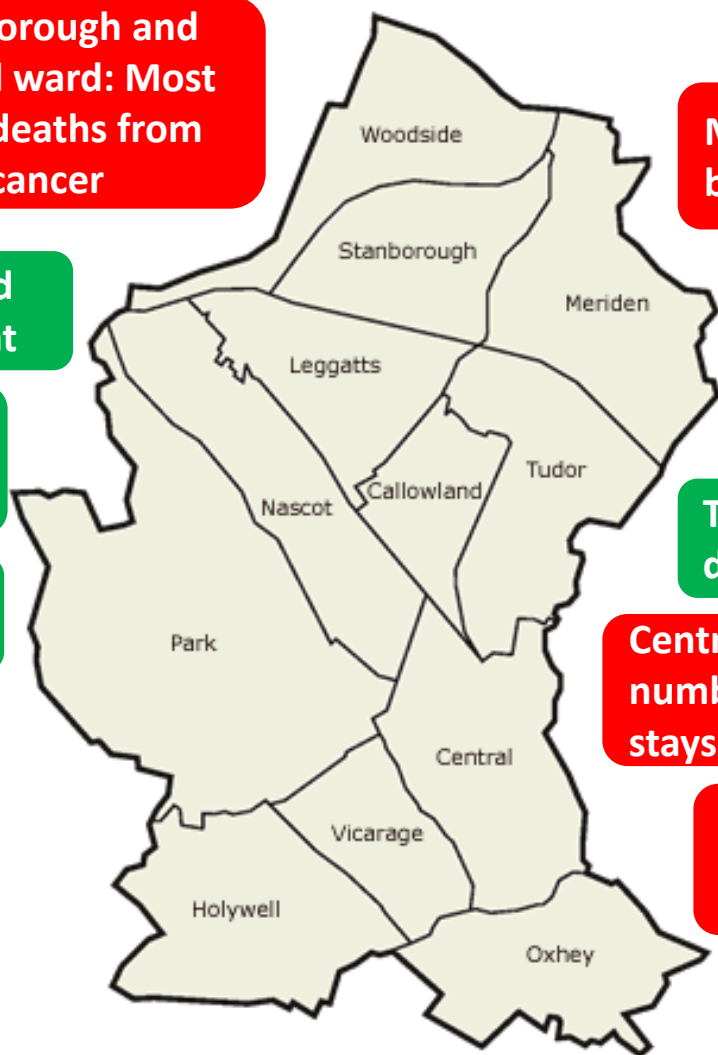
**Central Ward & Hollywell highest
number 65+ hip fractures**

**Significantly higher number
of children & older people
living in poverty: Hollywell
& Vicarage**

**Leggatts & Park Ward
6.7% low birth weight**

**Park Ward: lowest
number of people dying
from circulatory disease**

**Park Ward: lowest rate
of early death**



Living well and preventing ill-health

Greater focus on preventing ill-health happening or worsening

We want people to live well, and stay well, for as long as they can by:

- working with councils, communities and voluntary sector to improve factors like housing and heating
- helping vulnerable residents and carers to overcome social isolation and get support
- helping people to make healthy lifestyle choices



A national **health** service not a national **sickness** service



Hertfordshire and West Essex

Towards a healthier future

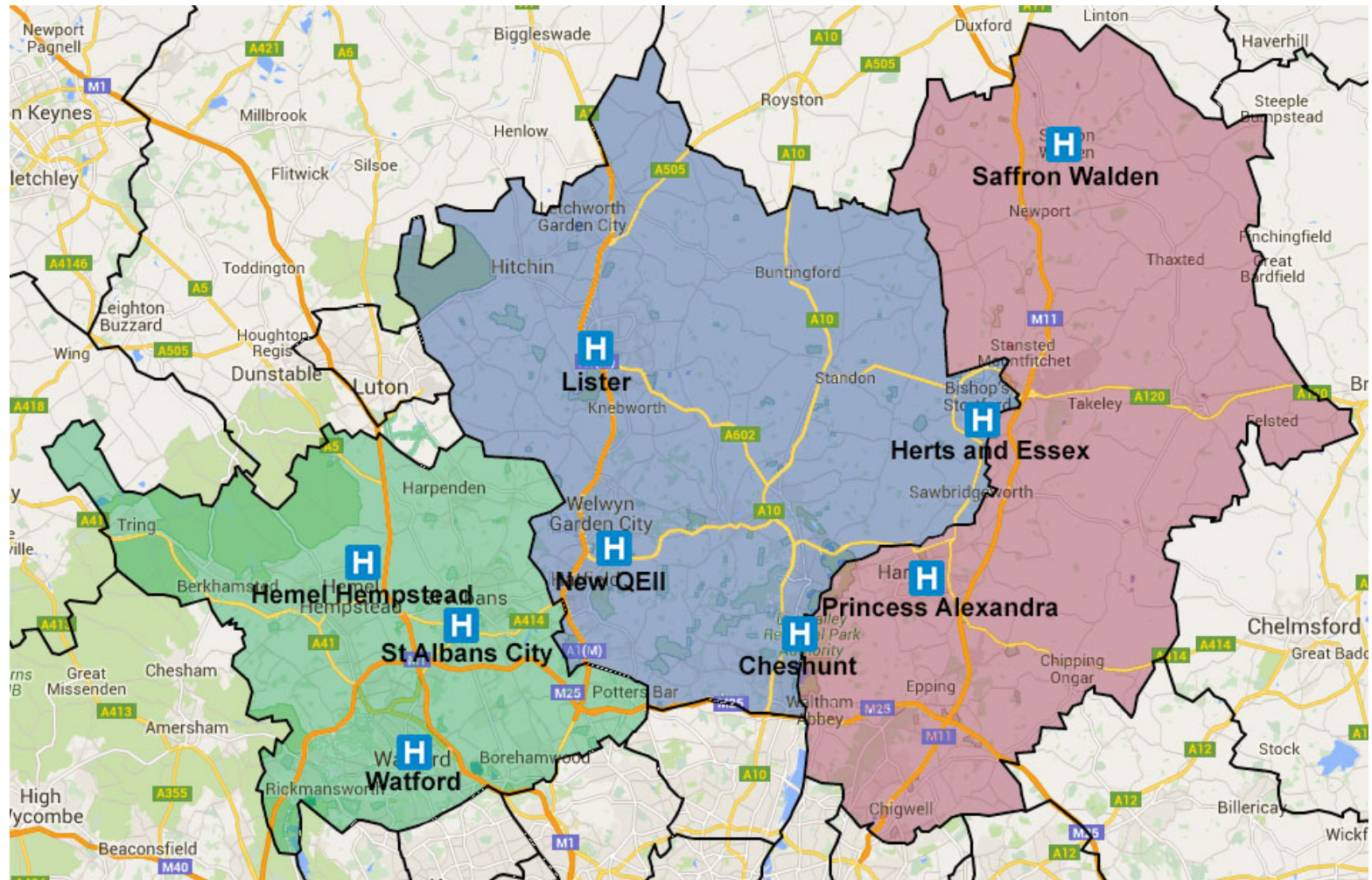
Sustainability and Transformation Plan

2017-2021



Getting to know the neighbours

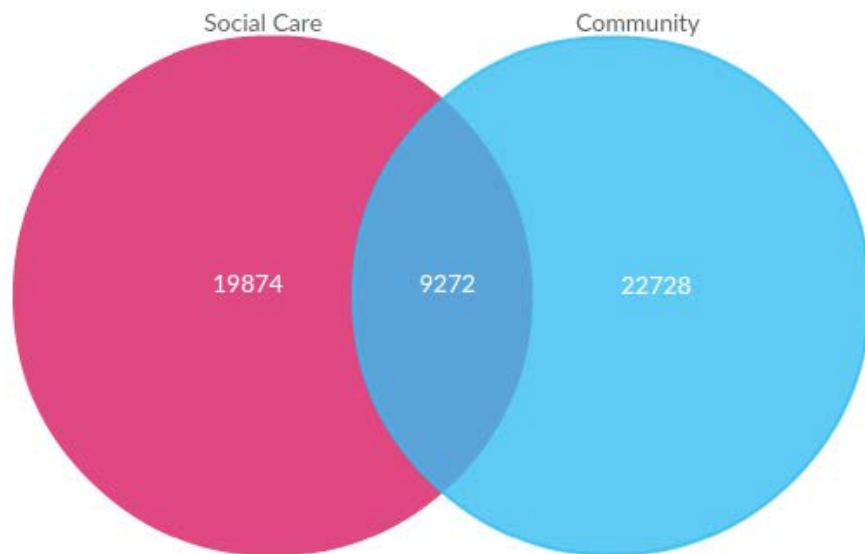
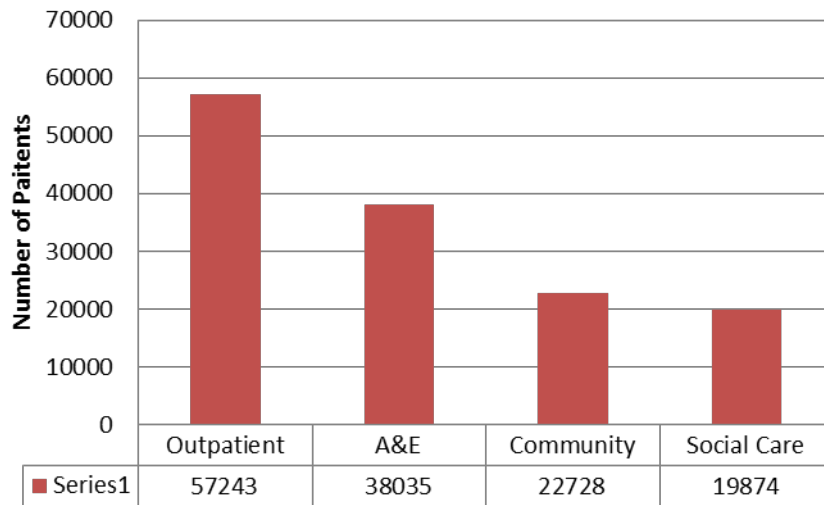
...Commissioning at scale



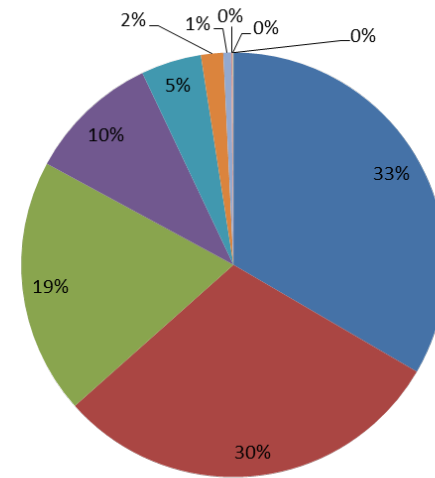
The Challenge: service use and LTCs

Analysis on residents aged 65+ (Mede Data = March 15 – Jan16)

Number of Patients interacting with services (last interaction post March 2015)

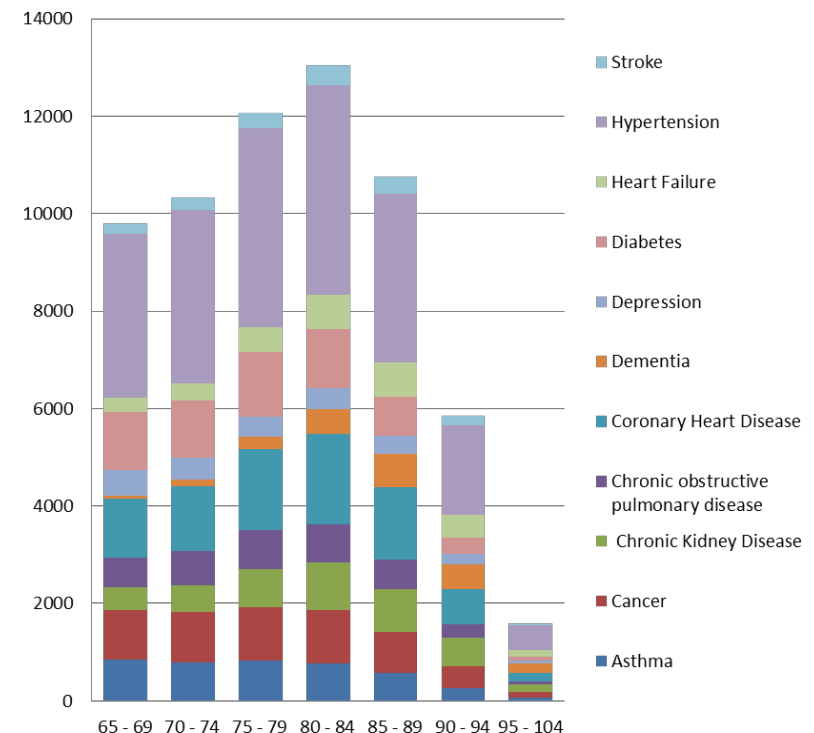


Number of patients attending A&E



Number of LTC	Number of patients attending A&E
1	9449
2	8496
3	5507
4	2841
5	1301
6	479
7	167
8	39
9	8
10	3
Grand Total	28290

Most Common LTCs for patients presenting at A&E by age cohort



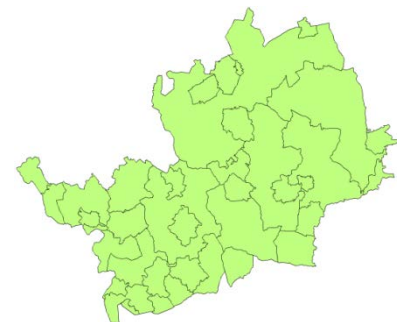
What is the Better Care Fund?

*“The Better Care Fund is a **single pooled budget** to support health and social care services to work more closely together in local areas...”*

NHS Planning Guidance, December 2013

For Hertfordshire, this means:

- ✓ Supporting joined up health and social care
- ✓ Bringing together CCG and social care older people budgets
- ✓ Includes Disabled Facilities Grant (**£6.3m** in 2017-18)
- ✓ Bringing together existing activity and newly agreed priorities into a single plan



BCF Plan 2017-19: Vision

"A system that delivers the right care and support at the right time and in the right place for individuals, their families and their carers"





Thank you

David Evans

Director of Commissioning

david.evans@hertsvalleysccg.nhs.uk